




"No Matter how you feel,
get up, dress up,
show up,
and never give up"

A white silhouette of a dancer in a dynamic pose, with one leg raised and arms flowing, positioned to the right of the text.

FALL DANCE DRESS CODE GUIDE 2024-25

- On the following pages you'll see examples of proper attire for each age/style/level as well as pricing for what we sell.
- You do not have to buy through us BUT we do love when people support small businesses whenever they can.
- We have size kits at Allegro so you can rest easy knowing your dancewear will fit.
- We are currently accepting orders in person or by email to hello@allegrocsa.org
- Questions? Send us an email or a text! We are happy to help :)

3-7
GIRLS

CREATIVE MOVEMENT | PRIMARY BALLET

CLASS COLOR: LIGHT PINK & LAVENDER

PRE-BALLET/TAP

DANCE
DRESSES

Dance dress or leotard with an optional skirt. Hair up in a ballet bun. Footed or convertible dance tights in either ballet pink or skin toned. Leather or canvas ballet shoes to match the tights. Black Mary Jane style tap shoes. A dance bag to bring their shoes into class.



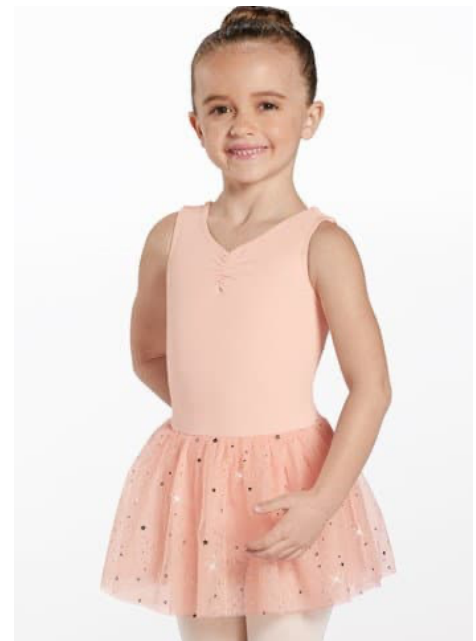
Cotton Tank Dress - D12830
\$25 (pink or lavender)



Cotton Tiered Skirt Dress -
D10050
\$25 (pink)



Cap Sleeved Dress - D9392N
\$25 (pink or lavender)



Foil Star Dress - D12102
\$30 (pink)

3-7
GIRLS

CREATIVE MOVEMENT | PRIMARY BALLET

LEOTARDS
SKIRTS

CLASS COLOR: LIGHT PINK & LAVENDER

PRE-BALLET/TAP



Rhinestone Leotard -
CL12622
\$30 (pink)



Short Sleeve Leotard -
MT12458
\$20 (pink or lavender)



Adjustable Strap
Cotton Tank -
CL12110
**\$20 (pink or
lavendar)**



Camisole Leotard -
CL11870
\$20 (pink or lavender)



Skirt with Bow - S9010
\$20 (pink or lavender)



Strappy Leotard -
CL12109
\$30 (pink)

3-7
GIRLS

CREATIVE MOVEMENT | PRIMARY BALLET

CLASS COLOR: LIGHT PINK & LAVENDER

PRE-BALLET/TAP

DANCE
DRESSES



Leather Fullsole -
W300
\$25



Canvas Fullsole -
W100
\$20



No Tie Tap Shoe
W2600
\$28



FOOTED TIGHTS - W990C
\$12 (ballet pink - skin tone)



CONVERTIBLE TIGHTS - W900C
\$12 (Ballet Pink - Skin Tone)

CLASS COLOR: Dark Pink, Periwinkle,
Turquoise, Black

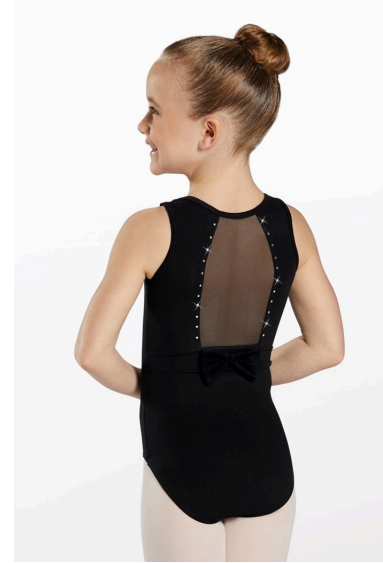
Dance dresses or leotards with optional skirt. Footed or convertible dance tights (not pantyhose) in either ballet pink or skin toned. Leather or canvas ballet shoes to match the tights. Ballet slippers or jazz shoes that are either ballet pink or to match skin tone. Hair should be worn in a neat, ballet bun. No jewelry. A dance bag to carry dance supplies.



Adjustable Racerback - 14051
\$30 (bubblegum, periwinkle,
black)



High Back, Adjustable
straps - MT12129
\$20 (cerise, periwinkle,
black)



Rhinestone Leotard,
CL12622
\$30 (black)



Scallop Dance Dress -
D11298
\$30 (black, turquoise,
mulberry)



Classic Tank Dress - D12300
\$25 (Mulberry, Bubblegum,
Black)

8-11 GIRLS

BALLET

CLASS COLOR: Dark Pink, Periwinkle,
Turquoise, Black

SHOES



Leather Splitsole -
W300
\$25



Canvas Splitsole -
W500
\$20



FOOTED TIGHTS - W990C
\$12 (ballet pink - skin tone)



CONVERTIBLE TIGHTS - W900C
\$12 (ballet pink - skin tone)

12-18

GIRLS

BALLET | MODERN

CLASS COLOR FOR AGES 12-18:
Dark Teal, Black Cherry, Grape, Black

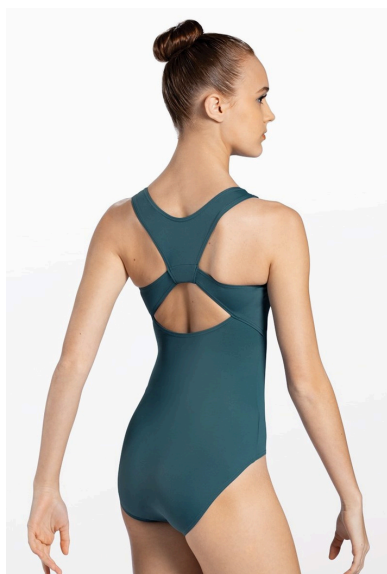
LEOTARDS

SKIRTS

Dance dresses or leotards with optional skirt. Footed or convertible dance tights (not pantyhose) in either ballet pink or skin toned. Leather or canvas ballet shoes to match the tights. Ballet slippers or jazz shoes that are either ballet pink or to match skin tone. Hair should be worn in a neat, ballet bun. No jewelry. A dance bag to carry dance supplies.



Lace Cap Sleeve - 14539
\$30 (black, raisin)



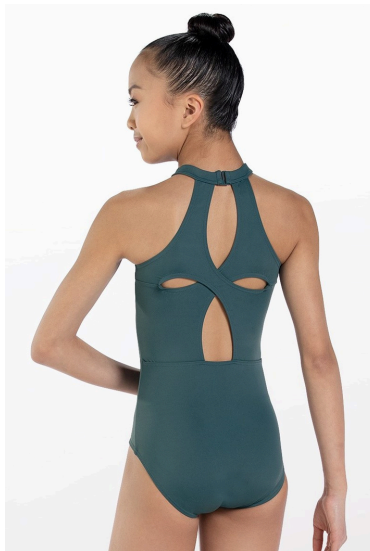
Racerback - 14539
\$25 (black, raisin, pine)



Classic Tank - MT12456
\$25 (grape, black, black cherry, dark teal)



Dress with Mesh Skirt -
D12071
\$32 (black, black cherry)



High Neck Clover Back -
D11298
\$32 (black, pine, amethyst)



Mesh Faux Wrap Skirt -
S12072
\$25 (black, pine, black cherry)

12-18

BALLET | MODERN

SHOES

GIRLS

CLASS COLOR FOR AGES 12-18:
Dark Teal, Black Cherry, Grape, Black



**Canvas Split-Sole Ballet -
W200
\$25**



**Leather Split-Sole Ballet -
W300
\$30 - to match skin tone**



**Low Profile Slip On Jazz -
W850
\$35 - to match skin tone**



**Neoprene Turner - W130
\$20**



**Leather Half Sole - W2220
\$22**



**2-Way Stretch Canvas
Half Sole - W2350
\$22**

Leotard, tanks, or fitted t-shirts. Pants - must cover knees. No jeans. No mid-driffs or loose t-shirts. Hair pulled up, off face. No jewelry.

Advanced Dancers: Check with instructor to get info on advanced tap shoes



No-Tie Tap Shoe - W2600
Primary/Petite Class
\$28



Lace Up Tap - W1600
Junior/Senior Tap
\$32



Crossover Back Tank
Junior/Senior Tap, black or
amethyst
\$27



Low Rise Cargo Pant -
16649
\$32 (Black, Amethyst,
Bubblegum)



Mid Rise Full Length
Leggings - MT12466
\$30 (black)



Mid Rise Capri Leggings -
MT12467
\$27 (black)

ALL AGES

HIP HOP/ACRO/MUSIC THEATRE

PANTS/SHOES
LEOTARDS

Leotard - black. Pants - must cover knees. No mid-driffs or loose t-shirts
Hair pulled up, off face. No jewlrey. Clean sneakers, only used in the studio



Low Rise Cargo Pant -
16649
\$32 (Black, Amethyst,
Bubblegum)



Mid Rise Capri Leggings -
MT12467
\$27 (black)



Mid Rise Full Length
Leggings - MT12466
\$30 (black)



Classic Tank Leotard
- MT12456
\$22 (black only)



Low Profile Slip On Jazz -
W850 (for Jazz class)
\$35 - to match skin tone